



## Maple Learn for FE & Schools

Maplesoft

Available to purchase until 30/04/2028

This agreement provides a site licence for Maple Learn, Maplesoft's online tool for teaching and learning mathematics that puts all the visualisation, solving tools, and interactivity you want at your fingertips, while also giving you the flexibility to work through steps like you would on paper.

## Key Facts

### Benefits

- 3 year licence with fixed pricing
- Annual opt out without penalty
- Access from institutional and personal devices included

### Important Dates

**Agreement start:** 1 May 2023

**Agreement end:** 30 April 2028

**Subsequent invoice date:** 1 month in advance of the licence anniversary date

### Commitment Period

Institutions may participate at any time during the agreement period; however, they will be bound by the terms and conditions, including payments for 3 years from their enrolment unless the annual opt out clause is invoked.

### Licence Type

Site licence

### Eligible Institutions

This Agreement is available to Institutions of Further Education and Schools in the UK and the Republic of Ireland.

Institutions of Higher Education in the UK and the Republic of Ireland can purchase Maple Learn as an add-on product under the **Maplesoft 2023 Chest Agreement**.

## Product Information

### Supplier Details

**Licensor:** Waterloo Maple Inc, acting through its Trading Division "Maplesoft", an Ontario, Canada-based company with offices at 615 Kumpf Drive, Waterloo, ON, N2V 1K8, Canada.

## Product Description

Looking for an online mathematics tool to use in teaching mathematics?

With over 30 years of experience of working with educators to bring software to the mathematics classroom, Maplesoft has developed **Maple Learn**, an online teaching and learning environment.

Maple Learn's unique, like-paper-but-better environment puts all the visualisation, solving tools, and interactivity you want at your fingertips, while also giving you the flexibility to work through steps like you would on paper. It provides a single, familiar environment that supports and enriches how you teach, making it easy to bring the benefits of technology to your students.

With Maple Learn, you can:

- **Provide illuminating graphs, computations, explanations, and interactive explorations all together in a single online document.** There is no need to switch between tools.
- **Focus students' attention on the most important steps.** You can work through problems using a combination of manual steps and computations performed by Maple Learn, so you control the level of detail shown in the calculation.
- **Provide more engaging examples.** Since you don't have to do every time-consuming step of the solution by hand, you can provide more complex, real-world problems to motivate your students.
- **Parameterise expressions at the click of a button** so you and your students can explore concepts, even on the spur of the moment.
- **Easily create and share documents and applications with your class** to explore on their own.
- **Use one tool to teach all your subjects.** Maple Learn covers everything from secondary school mathematics up until the end of second year University, so you don't have to switch tools when you switch classes.

**Maple Learn is available to try with a free Basic account.** To see some of what Maple Learn can do, explore the **Maple Learn Example Gallery**.

In particular, there are **A-Level Mathematics** and **GCSE Mathematics** content collections supporting courses following the AQA and Pearson exam specifications, enabling educators to deliver engaging, interactive maths experiences for students through the use of customisable content created to meet the specific needs of their classes:

**A-Level Mathematics** / A-Level Mathematics: Curriculum Introduction

**A-Level Mathematics** / Algebra and Functions

- Rules of Exponents Summary
- Addition of Exponents
- Subtraction of Exponents
- Powers of Powers

**A-Level Mathematics** / Cartesian Coordinate Geometry

**GCSE Mathematics** / GCSE Mathematics: Curriculum Introduction

**GCSE Mathematics** / Number

- Basic Operations with Decimal Numbers
- Order of Operations Activity
- Prime Numbers Overview
- Finding Lowest Common Multiple With Prime Factorization

**GCSE Mathematics** / Algebra

## Service and Support

### Trials

Maple Learn is available to try with a free **Basic account**.

## Product Documentation and Training Materials

- [How to Use Maple Learn Collection](#)
- [Getting Started with Maple Learn](#)

## Technical Support

Maplesoft will provide telephone advice and support to the nominated Technical and Deputy Technical Contacts at Licensed Institutions during normal business hours. Maplesoft support can be contacted at:

Phone: 01223 828989

Email: [support@maplesoft.com](mailto:support@maplesoft.com)

## Supplier Web Address

Supplier home page: <https://www.maplesoft.com>

Maple Learn home page: <https://learn.maplesoft.com>

## System Releases, New Versions and Functionality:

New releases, versions and functionality are included.

## Maplesoft's Privacy Policy

<https://www.maplesoft.com/privacy>

---

# Useful Resources

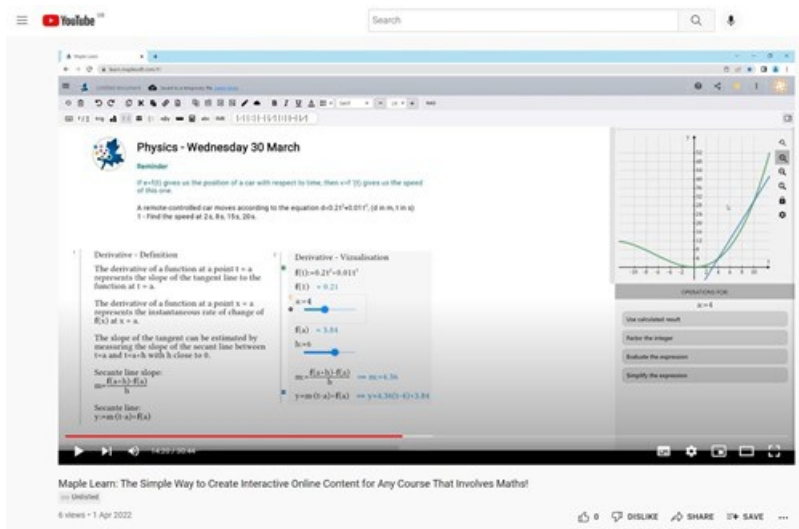
## Introducing Maple Learn

Click on the image below to watch an introduction to Maple Learn:



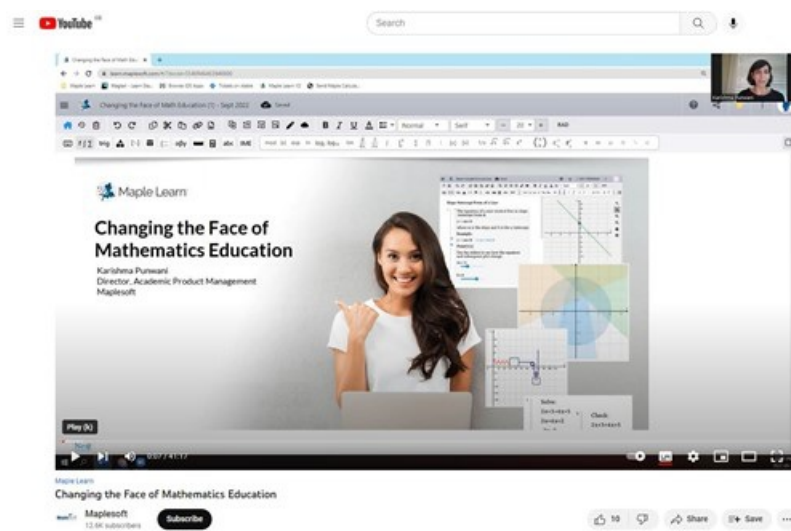
## Maple Learn: The Simple Way to Create Interactive Online Content for Any Course That Involves Maths

Click on the image below to watch the recording of the Further Education webinar held on 30 March 2022:



## Maple Learn: Changing the Face of Mathematics Education

Click on the image below to watch a webinar on how Maple Learn is changing the face of mathematics education. You'll discover how Maple Learn provides a flexible interactive environment for solving problems, a great platform for conceptual learning, and incredibly simple content development and deployment solutions. You'll also discover low-effort ways to take advantage of Maple Learn in your classroom immediately.



Click on the following links for:

- [Using Maple Learn - A Brief Tutorial](#)
- [How to Design Effective Interactive Learning Activities](#) - watch University instructor and YouTube personality Dr Trefor Bazett show you some of the exciting things instructors are doing with Maple Learn to incorporate interactive learning elements in the classroom

## Terms and Conditions

**Licensor:** Waterloo Maple Inc, acting through its Trading Division "Maplesoft", an Ontario, Canada-based company with offices at 615 Kumpf Drive, Waterloo, ON, N2V 1K8, Canada.

The Chest Order, together with the Licence Terms and Conditions, and any exceptions listed below, create a legally binding contract between your institution, organisation or company and the Licensor. Therefore please read the terms and conditions carefully and only submit a Chest Order if its terms and conditions are acceptable to your institution, organisation or company and you have the authority to make the financial commitment shown.

## Licence Type

This Site licence is subject to the terms and conditions for the [Standard Chest Licence for Software \(June 2011\)](#).

## Payment Terms

On receipt of a completed order, Sites will be invoiced by Maplesoft for the first year of their licence. For each subsequent year, Sites will be invoiced 1 month in advance of the anniversary date of their licence.

- Complete one Purchase Order made out to Maplesoft Europe Ltd., The Officers' Mess, Royston Road, Duxford, Cambridgeshire CB22 4QH for the licence fees.

All terms contained in a PO are expressly rejected and do not form part of the Licence or vary the Licence terms in any way.

Sites may, if they wish, pay a single charge to Maplesoft to cover their commitment period (3 years). Please advise [Chest Help](#) if you would like to do this.

## Termination Clauses

Licensees may opt out of the agreement annually by giving notice not later than 2 months preceding the next subscription year.

## Location and Use Permissions

The product(s) may be used by any Authorised User of the Licensee for Educational Purposes which includes the administration and management of the licensee's educational and research operations. These permissions are described in the terms and conditions for the Standard Chest Licence for Software.

Students	Yes
Academic Staff	Yes
Non-Academic Staff	Yes
Administration and management	Yes
Staff home use rights	Yes
Student home use rights	Yes

## Personal Licences

As home use rights are already included as standard, personal licences are not required under this Agreement.

# Products and Pricing

## Licence Term

Institutions commit for 3 years from when they start their licence. Pricing is in UK Pounds (£s) and excludes VAT which shall apply at the appropriate rate. **Maplesoft will invoice for the licence fees.**

Note that Multi-Academy Trusts need to purchase a separate licence for each School they represent.

Payment terms are shown on the Terms and Conditions Tab.

## How to Order

Making a selection in the pricing table will pass through to the online order form when you click on Order now (having logged in to the Chest website).

If you have any questions, please contact [Chest Help](#).

## Pricing

Product	Term	Band	Price per year
Maple Learn	3 years	FE & Schools	£630

Commercial in confidence  
Operating address: Chest (a Jisc Enterprise), 4 Portwall Lane, Bristol. BS1 6NB email:help@chest.ac.uk tel:0300 121 0878  
Jisc (Registered Office), 4 Portwall Lane , Bristol, BS1 6NB | Charity No. 1149740 | Company No. 5747339